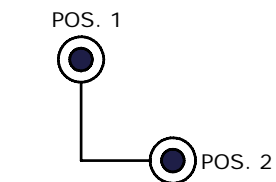
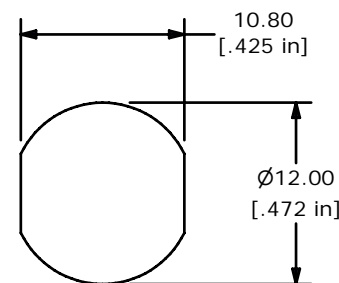


ISOMETRIC
SCALE 1:1



CIRCUIT: SPDT
CONTACT CONFIGURATION
90° INDEXING

SWITCH FUNCTION	
POS 1	POS 2
↑	→
OFF	1-2



RECOMENDED PANEL CUTOUT

LEGEND

- = INDICATES KEY PULL POSSIBLE
- = DETENT POSITION

NOTES:

1. ALL DIMENSIONS IN MM[INCH]
2. GENERAL TOLERANCE: x.x= ±0.4
x.xx= ±0.25
3. TERM. NOS. FOR REFERENCE ONLY.
- ▲ 4. RATING: 1A @125VAC, 0.5A @250VAC
5. CONTACT RESISTANCE: 10milli-OHMS
6. DIELECTRIC STRENGTH: 1000 VAC-1Minute
7. MATERIALS:
HOUSING: ZINC ALLOY W/CHROME PLATING
CYLINDER: ZINC ALLOY W/CHROME PLATING
▲ TERMINAL AND CONTACTS: SILVER PLATED
▲ KEYS (2) KEY CODE 1501: ZINC ALLOY, CHROME PLATING
8. DENOTES CRITICAL PARAMETER.
9. 2002/95/EC (ROHS) COMPLIANT
- ▲ 10. KEYLOCK, KEYS, AND HEX NUT TO BE PACKED TOGETHER IN INDIVIDUAL BAGS.



B	17991	REDRAWN AND ADD NOTE 10	3/3/08	RC
REV	PCR NO	DESCRIPTION	DATE	BY

TITLE KO132A1501				
SCALE	DATE	DR	DWG	REV
2:1	3/3/2008	RC	K400102	B

THE INFORMATION CONTAINED IN THIS DOCUMENT IS PROPRIETARY TO E-SWITCH AND IS NOT TO BE COPIED OR TRANSFERRED